

# Teacher Websites: Adding Videos

There are two main ways to add videos to your teacher website;

1. Upload the video to OnCourse and link it to the website

**Considerations:** this video will have to be loaded into your Documents section, which will take a large chunk of your available space

2. Upload (or find) the video on a video hosting site like YouTube, Vimeo, TeacherTube, etc. and embed this file in OnCourse

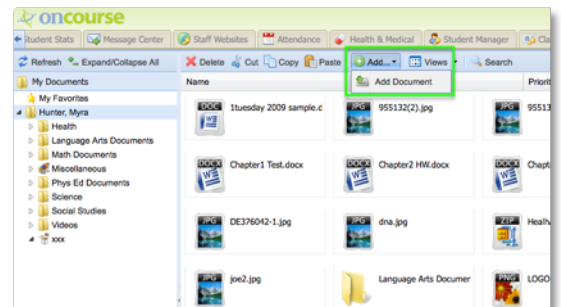


**Considerations:** many schools block access to sites like YouTube, so your video may not appear to your students while they are in school

## Uploading the Video to OnCourse

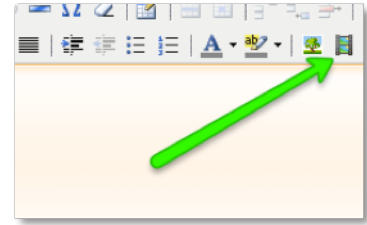
OnCourse supports the following file types: Flash, WMV, MOV, Shockwave, Real Media, HTML5, and IFrame. To upload a video, follow these steps:

1. Click the *Documents* tab
2. To put your video into a folder, select the folder; then, click the **Add** button on the toolbar (shown right) and select **Add Document**
3. Click the **Add File** button
4. Select the file from your hard drive
5. Click the **Upload File** button
6. The file will upload into your *Documents*; then switch to the *My Website* tab



7. Navigate to the page where the video will be displayed, click the **Pencil** icon to open the website editor

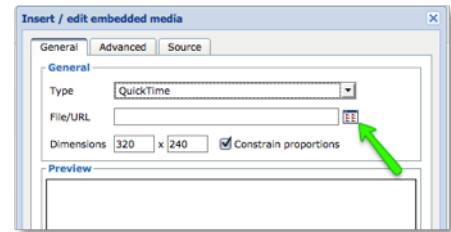
8. Click the **Insert Media** button on the editor toolbar (shown right)



9. In the *Type* drop-down menu, select the video format

10. Click the square **Browse** icon (shown right)

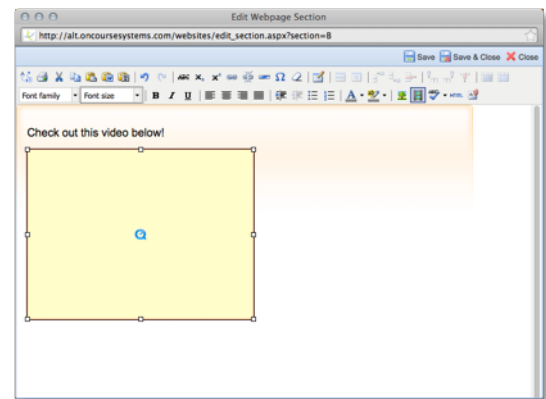
11. The documents window will appear. Select the uploaded video.



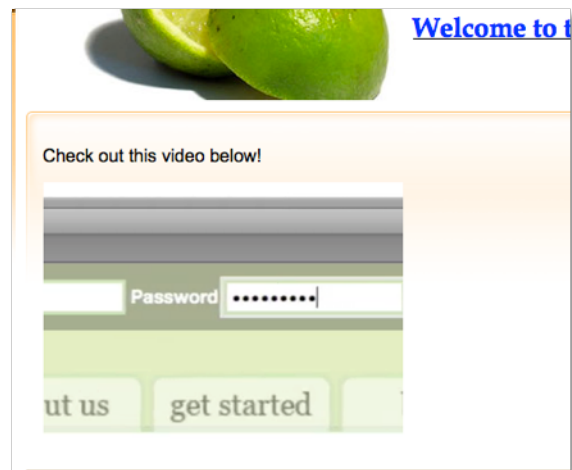
12. Click the **Insert** button

13. The video will appear as a placeholder in the website editor. It can now be resized (clicking the small white corners and dragging to resize) or aligned with the regular left/center/right alignment buttons

14. Click **Save & Close**



Any visitor can now click on the video to start/stop video playback.



## Embedding Video from another Site

To embed a video from a video hosting website, follow these steps:

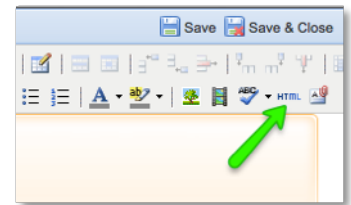
1. Find the video on the web and copy the "Embed Code"
  - a. If this video is on YouTube or Vimeo, search for the "Embed Code" (YouTube shown right).

In both cases, you can request the "old embed code". When you find it, copy it.

- b. On TeacherTube, the embed code is stored in an area marked "embeddable player" on the right side of the screen. Copy this code.

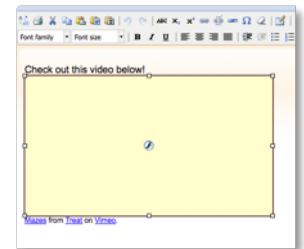


2. Return to the OnCourse website, open the website editor, and click the **HTML** button on the toolbar (shown right)



3. Scroll to the VERY BOTTOM of the HTML code, and paste the embed code in the last possible spot

4. The video will appear as a placeholder in the website editor, as shown to the right. It can now be resized (clicking the small white corners and dragging to resize) or aligned with the regular left/center/right alignment buttons. Click **Save and Close**.



Your visitors can now launch the video by clicking in the video placeholder.

