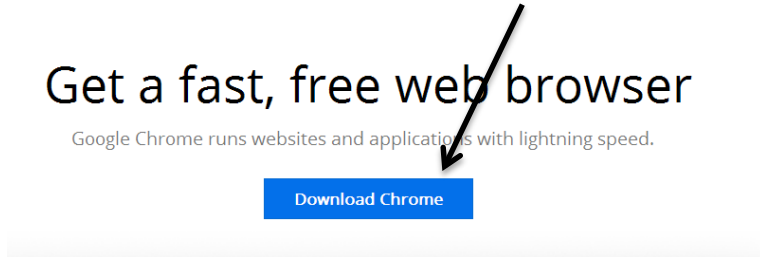


Check to see if you have Google Chrome installed on your computer by clicking on the “Start” button at the bottom left of your screen. Then mouse over “Programs.” If you do not see “Google Chrome” in the list that pops up, you will need to download it. If it is already installed, please go to the 2nd page of this document to change some settings.

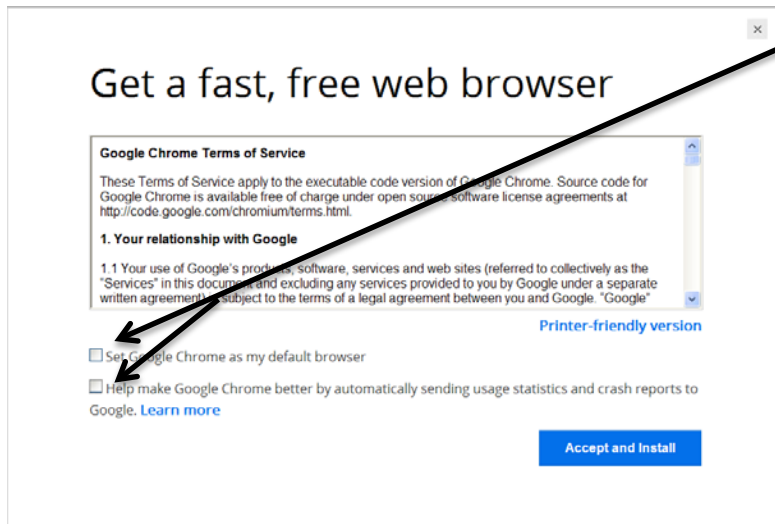
To Install Google Chrome:

Go to <https://www.google.com/chrome/browser/>

Once it has pulled up, click on “Download Chrome”



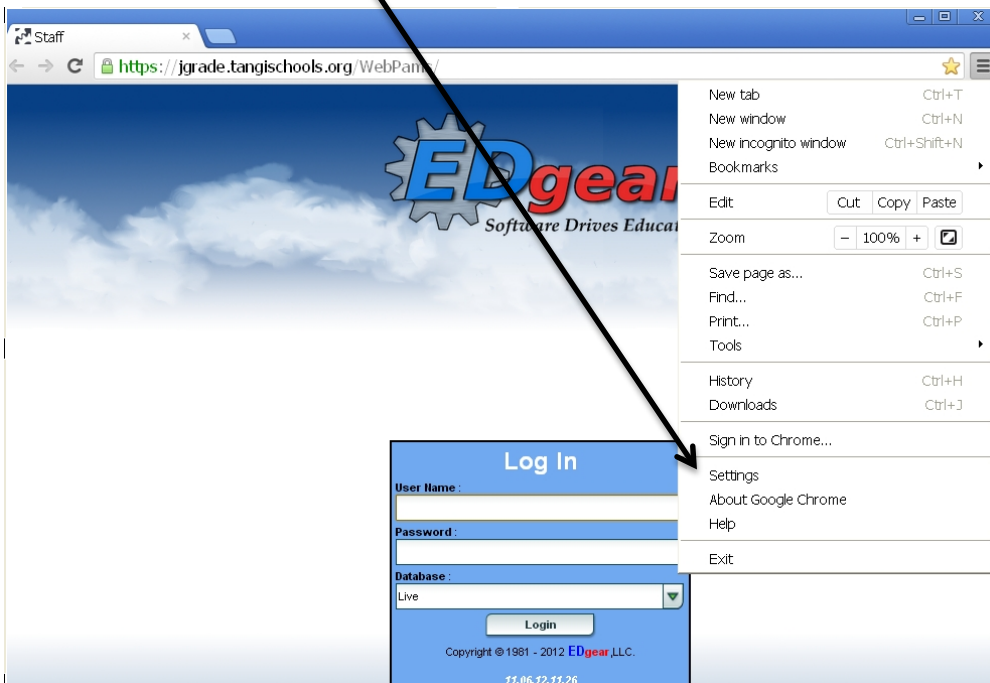
When the following box pops up, make sure both of the bottom boxes are unselected. Click “Accept and Install”



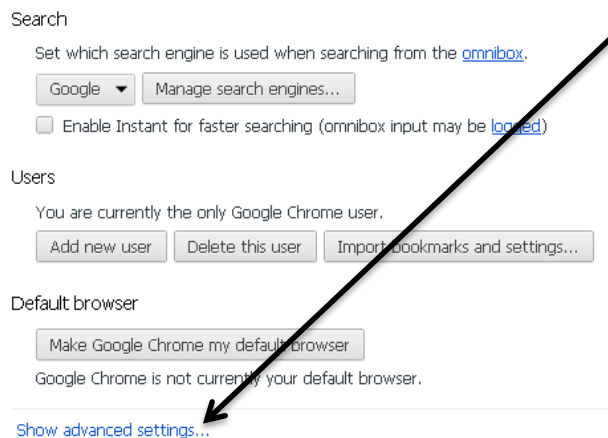
Once it is installed, there should be a shortcut to Google Chrome on your desktop. Open it and enter <https://jgrade.tangischools.org/jcampus/> in the address bar.



Before you log in, you will need to change some settings. Click on the menu button to the right of the star, then click on "settings."



On the "Settings" screen, click on "Show advanced settings" on the bottom of the page.



Scroll down until you see “Privacy” and click on “Content Settings”

Privacy

[Content settings...](#) [Clear browsing data...](#)

Google Chrome may use web services to improve your browsing experience. You may optionally disable these services. [Learn more](#)

- Use a web service to help resolve navigation errors
- Use a prediction service to help complete searches and URLs typed in the address bar
- Predict network actions to improve page load performance
- Enable phishing and malware protection
- Use a web service to help resolve spelling errors
- Automatically send usage statistics and crash reports to Google

When the next box pops up, scroll down until you see “Pop-ups.” Click on “Allow all sites to show pop-ups.” Then click “ok.”

- Do not allow any site to handle protocols

[Manage handlers...](#)

Plug-ins

- Run automatically (recommended)
- Click to play
- Block all

[Manage exceptions...](#)

[Disable individual plug-ins...](#)

Pop-ups

- Allow all sites to show pop-ups
- Do not allow any site to show pop-ups (recommended)

[Manage exceptions...](#)

If you want to make WebPams your home page in Google Chrome, under “On Startup,” select “Open a specific page or set of pages” and then click on “set pages”

Settings

Sign in

Sign in to Google Chrome with your Google Account to save your personalized browser f and access them from Google Chrome on any computer. You'll also be automatically sign favorite Google services. [Learn more](#)

[Sign in to Chrome](#)

On startup

- Open the New Tab page
- Continue where I left off [Learn more](#)
- Open a specific page or set of pages. [Set pages](#)

Enter in the WebPams link (<https://jgrade.tangischools.org/jcampus/>) in the “add a new page” blank. Click ok. This will now be your home page when you enter Google Chrome.



You can now close out of the Settings page and log into WebPams! Enjoy!