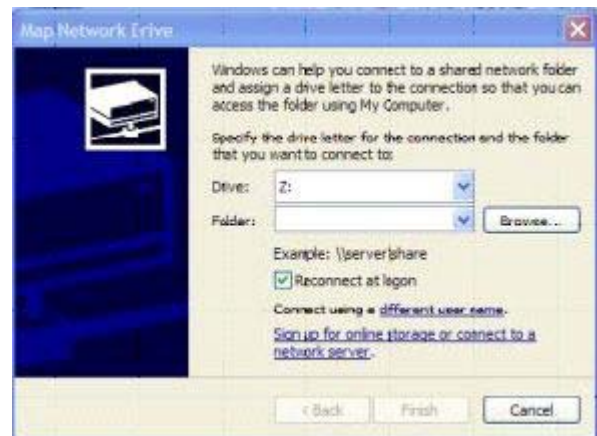




**To install the Type to Learn 3 software on your Windows XP or Windows 2000 computer**, make sure you are logged in with your username and password. (Please note that the \*\*\* in step 4 should be replaced with the three initials of your school's server.)

Follow these steps:

1. Right click on 'Network Neighborhood' or 'My Network Places'
2. Left click on 'Map Network Drive'
3. Click the down-pointing arrow next to the 'Drive' field and click on 'T:'
4. In the 'Folder' field type [\\\\*\\*\\*-dc\ttl3net](http://***-dc\ttl3net)
5. Make sure that the  is in front of 'Reconnect at login'.
6. Click 'Finish'
7. Double click the 'Client' folder
8. Double click 'Setup.exe' (the one with the icon of a computer in front of it) to start the installation process.
9. Click 'Next, Next, Next'
10. Click to select 'Full – install all components.'
11. Click 'Next, Next.'
12. A box will pop up that says, "Type to Learn 3 can import and convert your existing Type to Learn data files.... YES or NO... You should click 'NO' then 'Finish.'



---

**To install Type to Learn 3 software on a Windows 98 computer**, your computer must have network access and you should be logged in with the school login, for example 'DCR'. (Please note that the \*\*\* in step 1 are the three initials of your school's server.)

Follow these steps:

1. Double click 'My Computer' and double click the mapped drive icon 'T: ttl3net on \*\*\*-dc'
2. Double click the 'Client' folder
3. Double click 'Setup.exe' (the one with the icon of a computer in front of it) to start the installation process.
4. Click 'Next, Next, Next'
5. Click to select 'Full – install all components.'
6. Click 'Next, Next.'
7. A box will pop up that says, "Type to Learn 3 can import and convert your existing Type to Learn data files.... YES or NO... You should click 'NO' then 'Finish.'

This program is listed under 'Sunburst' in your Program Menu.